

OUR YEAR
Wakefield District 2024

SPARK
Wakefield's Cultural
Education Partnership



THE WAKEFIELD CURRICULUM





Introduction

The Wakefield Curriculum is a place-based creative curriculum resource for Early Years and Primary teachers that was created during Our Year. Our Year was a celebration of creativity, culture, heritage, movement and community that took place across Wakefield district in 2024. Our Year was funded by West Yorkshire Combined Authority and Arts Council England and led by Wakefield Council and partners.

The Wakefield Curriculum was developed by SPARK, Wakefield's Local Cultural Education Partnership. The resources have been created using the collections and expertise of our district's cultural organisations, and include stories of local events, people and places. They aim to connect your pupils with ideas that have shaped where they live and give them greater agency to make a positive difference to their district's future. This place-based learning approach will help develop children's enquiry skills, ignite their creativity and increase their knowledge and understanding of the Wakefield area's diverse culture and heritage.

The resources centre around three themes, chosen in consultation with teachers, that celebrate and reflect upon some of the key ideas that have shaped what Wakefield is today.

These themes are:

Coal Mining, The Local Environment and Sculpture

Who are the resources for?

The resources are aimed at teachers of Early Years, KS1 and KS2 pupils, working in schools and early years settings within the Wakefield District, and home educators. The content can also be adapted for use with pupils in KS3 and above.

How can I use the resources in my school?

The resources can be adapted by teachers to fit with your school's existing curricula. Documents are provided in an editable format so that you can adapt them to suit your pupils and use them in a way that works for you.

There are videos, audio files, photographs and historical documents from collections held on behalf of the people of Wakefield district. They are supported by contextual information and creative activity suggestions to bring them to life in the classroom or outside in your local area. Details are also provided to encourage you to explore these topics further through visits to the district's cultural and environmental organisations.

All material may be used for educational purposes only.



Coal Mining Resources

The history of coal mining in Wakefield district goes back many years. There is evidence of coal-fired pottery kilns being used in the Roman settlement of Lagentium (now Castleford) and of coal being mined by Augustine monks at Nostell Priory in the thirteenth century.

In the early nineteenth century, the demand for coal grew and Victorian industrialists realised that beneath the ground in Wakefield lay an abundance of high-quality coal. The number of mines increased quickly. Transport systems such as the Aire and Calder Navigation, turnpike roads and the railways were used to transport coal mined from the district to other areas of Britain and the world. The coal industry became one of the main sources of employment in the area until the mid-twentieth century when mines began to close. The legacy of coal mining lives on in Wakefield through the people, places and memories of the many former mining communities in the district and the collections held at National Coal Mining Museum for England.

Resources in this section include an overview timeline of mining in Wakefield and a guide to researching your local colliery. Three resources focus on Wakefield's mining communities, highlighting the impact of the mining industry on the men, women and children of the district. Two resources highlight the experiences of individual miners and mine owners, and two explore artistic responses to mining heritage.

Using historical archives, photographs, audio and video recordings and works of art, pupils will develop their enquiry and research skills as they deepen their understanding of what life was like in Wakefield's pit villages. Suggested activities encourage pupils to use music, drama and creative writing to develop and share their own ideas and imagination.



Resources



Image credit: National Coal Mining Museum for England



Image credit: Wakefield Libraries photographic collection



Image credit: Wakefield Libraries photographic collection

1 *A Timeline of Mining in Wakefield*

National Curriculum links: History

Suitable for: KS1, KS2

A timeline of key dates and events in the history of coal mining in Wakefield.

2 *A Guide to Researching your Local Colliery*

National Curriculum links: English, History, Mathematics,
Suitable for: KS1, KS2

A guide listing local and online sources to help teachers and pupils to find maps, images and information about their local colliery. Includes a worked example of the research available for Fryston Colliery.

3 *The Featherstone Massacre*

National Curriculum links: English, History, Music

Suitable for: KS2

A historical enquiry using material from West Yorkshire Archive Service to explore how the village of Featherstone was impacted by wage reductions for miners in 1893, and who was to blame for the deadly consequences of the riots that followed.

4 *The Kinsley Evictions*

National Curriculum links: English, History

Suitable for: EYFS, KS1, KS2

A PowerPoint resource containing photographs from the Wakefield Libraries collection, showing the impact on the Kinsley miners and their families who were evicted from their homes in 1905 during a dispute with mine owners.

5 *Jack Hulme: Slow Looking Routines*

National Curriculum Links: Art& Design, English, History

Suitable for: EYFS, KS1, KS2

A PowerPoint resource using photographs from the Jack Hulme collection held by Wakefield Museums and Castles, focused on the mining village of Fryston in the 1920s to 1960s.



Image credit: Wakefield Libraries photographic collection



Image credit: JMA Photography, courtesy of National Coal Mining Museum for England.

6 Emma Lister Kaye

National Curriculum links: English, History
Suitable for: EYFS, KS1, KS2

A fact sheet containing information and images from National Coal Mining Museum for England about the life of a female owner of Caphouse Colliery Wakefield in the nineteenth century.

7 Miner Stories

National Curriculum Links: English, History
Suitable for: KS1, KS2

A resource using a series of five short videos recorded by National Coal Mining Museum for England, featuring former miners who now work at the museum. In these videos, the miners talk about their memories of many aspects of their former work.

8 Drawings of Coal Miners by Henry Moore

National Curriculum Links: Art and Design, History
Suitable for EYFS, KS1, KS2

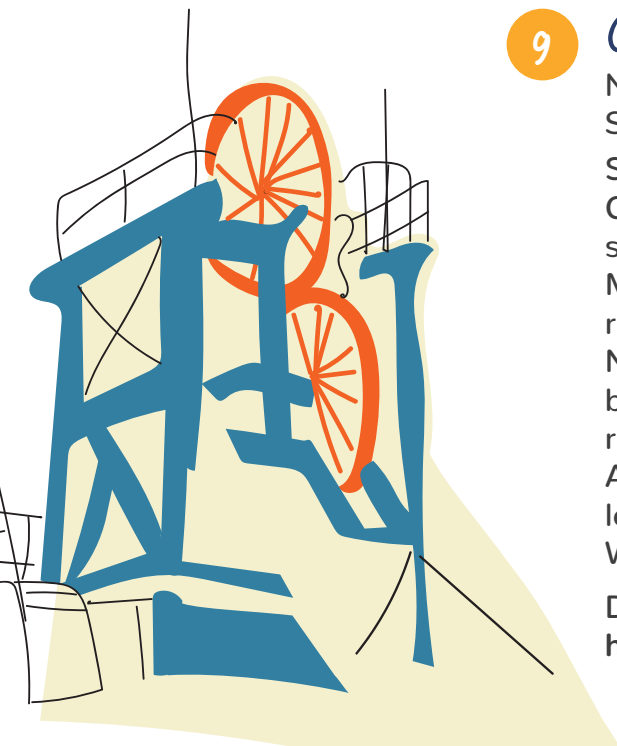
Images of work from Wakefield Art Collection by Henry Moore featuring drawings of miners at Wheldale Colliery in Castleford during World War II.

9 Coal Mining Compositions

National Curriculum links: Computing, Music
Suitable for: KS2

Step-by-guides developed by local music educators Jackie Craig and Nick Park, to composing a mining-inspired soundscape and a backing track to Ian McMillan's poem, *Miners Strike* commemorating the 1984/5 miners' strike, read by Phil Needham. Pupils will use sounds recorded at National Coal Mining Museum for England by Nick Park and brass band samples recorded by Slaithwaite Band. These resources have been created within YuStudio, a Digital Audio Workstation (DAW) within the music teaching and learning platform, Charanga, available to schools through Wakefield Music Services.

Download these resources from
<https://www.tradedservices.wakefield.gov.uk/SPARK>



Local Environment Resources

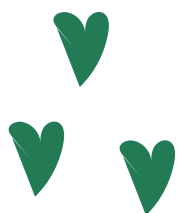
We live in a time of climate emergency, as the effects of global warming can increasingly be seen around the world. The place-based resources in this section offer an approach to climate education that helps pupils understand the natural and built environment that is all around them in Wakefield district and encourages them to take positive action.

Four of the resources guide teachers through activities that encourage pupils to explore the colours, textures and sounds of nature in their school grounds and local area. Pupils will use their senses and noticing skills to create artistic responses to their local environment, whilst also reaping the mental health and wellbeing benefits of being outdoors.

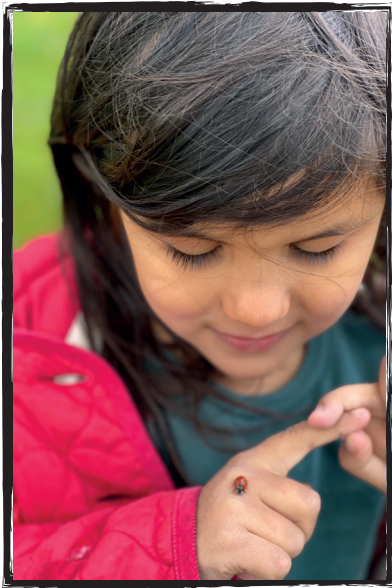
Using collections from Wakefield Libraries, Wakefield Museums and Castles, and West Yorkshire Archive Service, two resources highlight the impact of industrial pollution on Wakefield and some of the individuals who fought to stop harmful practices in the nineteenth and twentieth centuries.

Suggested activities encourage pupils to take inspiration from these campaigners and think creatively about the actions they can take today to raise awareness of local environmental issues.

Cultural organisations and businesses in Wakefield are developing ways to become more sustainable and reduce their impact on the local environment. Material from National Coal Mining Museum for England, Wakefield Council, Biffa and Theatre Royal Wakefield has been used to create a resource which highlights the challenges organisations face and the innovative ways in which they are responding to the climate emergency. Suggested activities encourage pupils to use their creativity to find solutions to help reduce these organisations' carbon footprint.



Resources



1 Exploring Nature

National Curriculum links: Art and Design, Science
Suitable for: EYFS, KS1, KS2

An activity developed by The Hepworth Wakefield that encourages pupils to explore colours, shapes, sounds and textures in the local natural environment.

2 Exploring Nature with Under 5's

National Curriculum links (EYFS): Communication and Language, PSED, Physical Development, Understanding the world, Expressive Art and Design
Suitable for: EYFS

Three short activities developed by local artist Bryony Pritchard using deep listening, mark making and noticing to develop pupils' understanding of the natural world.

3 A Guide to Natural Dyeing

National Curriculum links: Art and Design, Design & Technology, Science
Suitable for: EYFS, KS1, KS2

A step-by-step guide to using locally foraged plants to produce natural dyes and create designs on fabric, developed by local artist Jane Howroyd.

4 Local Environment Compositions

National Curriculum links: Computing, Music
Suitable for: KS2

Step-by-guides developed by local music educators Jackie Craig and Nick Park, to composing an environment-themed soundscape and a backing track to readings of letters recorded by Wakefield Historical Society using locally recorded sounds. Pupils will use a range of sounds recorded by Nick Park. These resources have been created within YuStudio, a Digital Audio Workstation (DAW) within the music teaching and learning platform, Charanga, available to schools through Wakefield Music Services.

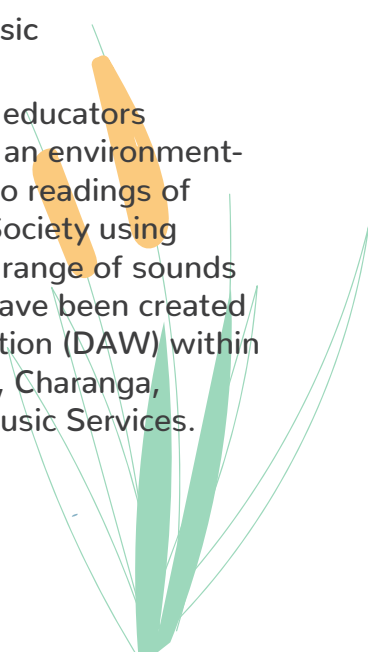




Image credit: Wakefield Libraries photographic collection

5 Pollution in Wakefield District

National Curriculum links: Art and Design, English, Geography, Maths, Science
Suitable for: KS2

A PowerPoint resource with information and images from Wakefield Libraries and National Coal Mining Museum for England about the effects of industrial pollution on Wakefield in the past and present.

6 Taking Action Against Pollution in Wakefield District

National Curriculum links: Art and Design, English, History
Suitable for: KS2

A resource created by The Theatre Royal Wakefield, Wakefield Libraries, Wakefield Museums and Castles and West Yorkshire Archive Service, using images and letters from their collections and audio files recorded by Wakefield Historical Society to highlight attempts by local residents to raise awareness of pollution in Wakefield's past.



Image credit: National Coal Mining Museum for England

7 A Greener Wakefield District

National Curriculum links: Art & Design, Design & Technology, English, Geography, Maths, Science
Suitable for: KS1, KS2

A PowerPoint resource with information and images from Wakefield Council, National Coal Mining Museum for England, Biffa and Theatre Royal Wakefield exploring how local organisations are developing new ways to generate greener electricity and more sustainable working practices. Activities encourage pupils to consider how Wakefield's cultural organisations and businesses can reduce their carbon footprint.



Download these resources from
<https://www.tradedservices.wakefield.gov.uk/SPARK>



Sculpture Resources

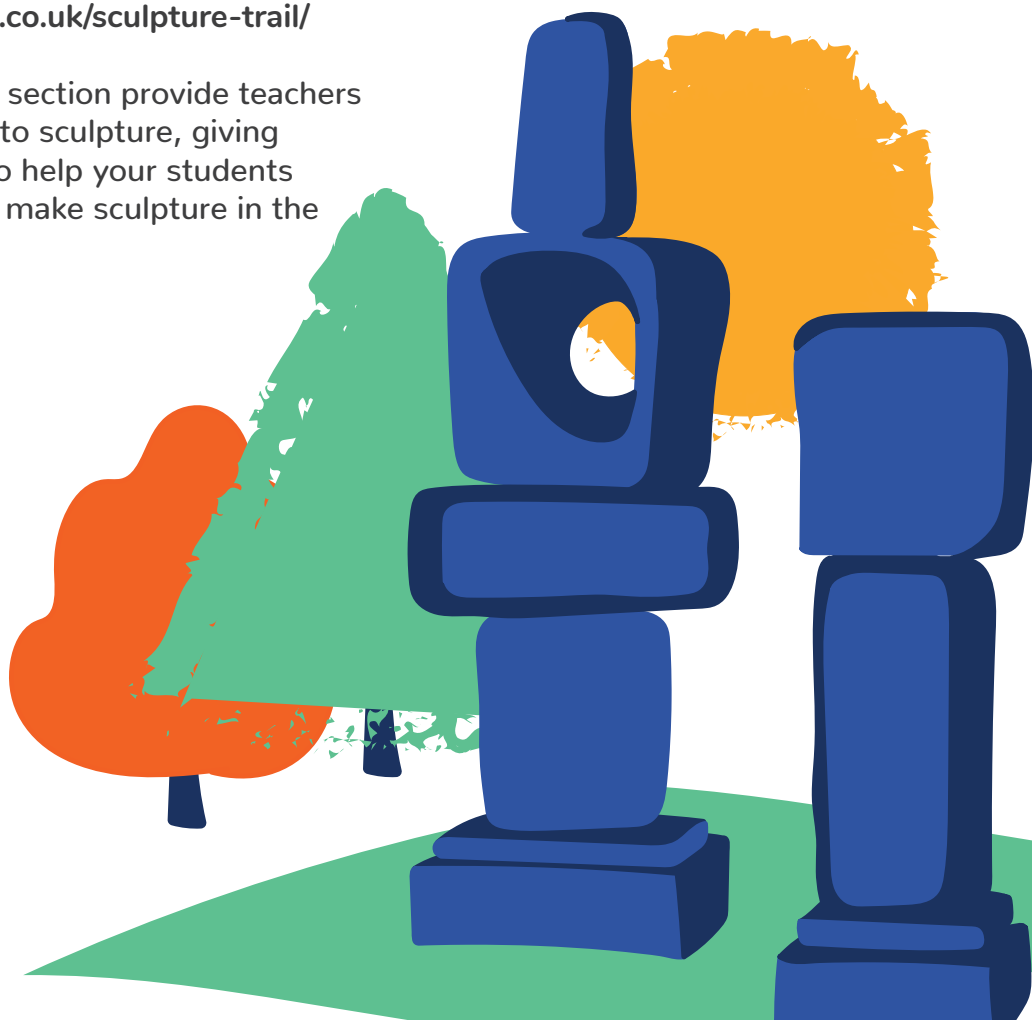
As the birthplace of two internationally celebrated sculptors, and the home of two award-winning art galleries, Wakefield district has an undeniably strong link to sculpture.

Works by Castleford-born Henry Moore (1898 - 1986) and Wakefield-born Barbara Hepworth (1903-1975) can be seen, together with work by many other modern and contemporary British and International artists, at both The Hepworth Wakefield and Yorkshire Sculpture Park. A vast range of public sculptures are also on display across the district, including six new works commissioned in 2023 as part of the Wakefield Sculpture Trail. For more information, please visit <https://experiencewakefield.co.uk/sculpture-trail/>

The resources in this section provide teachers with an introduction to sculpture, giving you the confidence to help your students talk about, draw and make sculpture in the classroom.

Examples of sculptures on display across Wakefield district are used to inspire your pupils' creativity and deepen their understanding of the processes that artists use to create sculpture.

Videos by local artist ArtJohn demonstrate the language and techniques of making sculptures, with suggested activities providing simple ways to develop your pupils' skills. A video featuring Wakefield-born artist Jason Wilsher-Mills gives an insight into Jason's artwork, his life as an artist, his inspiration and the ways in which growing up in Wakefield have shaped his work.



Resources



Henry Moore, Large Two Forms, 1966-9. Courtesy of the Henry Moore Foundation. Photo © Jonty Wilde, courtesy of Yorkshire Sculpture Park.



Image credit: ArtJohn



Barbara Hepworth, Winged Figure, 1961-2, image credit: Jonty Wilde, The Hepworth Wakefield.

1 Exploring Sculpture

National Curriculum links: Art and Design
Suitable for: EYFS, KS1, KS2

A guide to talking about, drawing and making sculpture developed by local artist Harriet Fletcher in collaboration with The Hepworth Wakefield and Yorkshire Sculpture Park. Includes a set of sculpture cards with examples from across the district.

2 Simple Sculpture Making

National Curriculum links: Art and Design
Suitable for: EYFS, KS1, KS2

A video created by local artist ArtJohn in collaboration with The Hepworth Wakefield and Yorkshire Sculpture Park, demonstrating simple sculpture making techniques using tin foil, cardboard and card.

3 Sculpture Inspired by Barbara Hepworth

National Curriculum links: Art and Design
Suitable for: EYFS, KS1, KS2

A video created by local artist ArtJohn in collaboration with The Hepworth Wakefield and Yorkshire Sculpture Park, demonstrating simple sculpture making techniques inspired by the work of Wakefield-born artist Barbara Hepworth, including using clay.

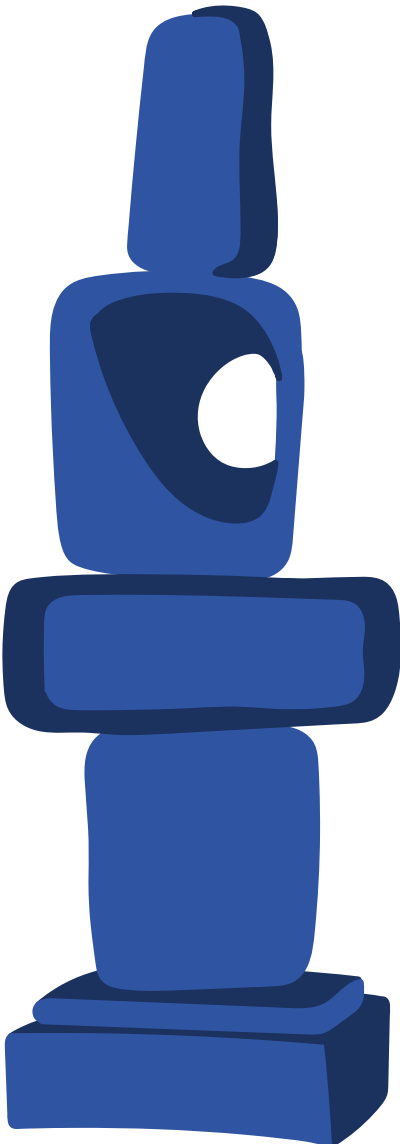
4 Sculpture from Nature

National Curriculum links: Art and Design
Suitable for: EYFS, KS1, KS2

A video created by local artist ArtJohn in collaboration with The Hepworth Wakefield and Yorkshire Sculpture Park, demonstrating simple sculpture making techniques using natural materials found outdoors.



Jason Wisler-Mills, Amazonian Caiman God, 2023, image credit: Scott Merrylees, Wakefield Council



5 Jason Wisler-Mills: An artist's ideas and inspiration

National Curriculum links: Art and Design
Suitable for: KS1, KS2

A video created by Nick Singleton, featuring Jason Wisler-Mills, an award-winning artist who has exhibited in the UK and internationally. Jason talks about his artwork, what inspires him and his relationship with Wakefield, the city in which he grew up.

6 Sculpture Compositions

National Curriculum links: Art & Design, Computing, English, History, Music
Suitable for: KS2

Step-by-guides developed by local music educators Jackie Craig and Nick Park, to composing a sculpture-themed soundscape, a backing track to an interview with artist Halima Cassell and a film track to accompany videos recorded by The Hepworth Wakefield and Jonny Walton for Yorkshire Sculpture Park. Pupils will use sounds recorded by Nick Park and Slaithwaite Band. These resources have been created within YuStudio, a Digital Audio Workstation (DAW) within the music teaching and learning platform, Charanga, available through Wakefield Music Services.

7 A Guide to Working with Artists in Schools

National Curriculum Links: All
Suitable for: EYFS, KS1, KS2

A step-by-step guide to contracting an artist to work with your school, developed by Sarah Osborne, Artistic Director of Yew Tree Arts.

8 Local Artist Directory

National Curriculum Links: All
Suitable for: EYFS, KS1, KS2

A list of local artists and practitioners who work with SPARK partners, including links to further details about their work.

Download these resources from
<https://www.tradedservices.wakefield.gov.uk/SPARK>

Further Information and Links

Below is a list of Wakefield cultural, heritage and environmental organisations with details of the services that they offer to schools in the Wakefield district.

Name	Website	Resource loan	Visits to schools	Hosting school visits	Downloadable resources	Teacher CPD
50 Things to do	https://wakefield.50thingstodo.org/app/os#!/welcome				x	
The Art House	https://the-arthouse.org.uk/supportforschools/			x		x
Biffa	https://biffawakefield.co.uk/education-outreach-programme/		x	x	x	
The Hepworth Wakefield	https://hepworthwakefield.org/your-visit/for-schools-colleges-and-universities/		x	x	x	x
The Mental Health Museum	https://www.southwestyorkshire.nhs.uk/mental-health-museum/home/		x	x		
National Coal Mining Museum for England	https://www.ncm.org.uk/learning/	x	x	x	x	
Nostell Priory	https://www.nationaltrust.org.uk/visit/yorkshire/nostell/group-visits-to-nostell#rt-school-visits-to-nostell			x		
RSPB Fairburn Ings	https://www.rspb.org.uk/days-out/reserves/fairburn-ings				x	
Schools Library Service	https://www.tradedservices.wakefield.gov.uk/Page/16447	x	x			
Theatre Royal Wakefield	https://www.theatreroyalwakefield.co.uk/take-part/schools-and-colleges		x	x		
Wakefield Libraries	https://www.wakefield.gov.uk/libraries-and-local-history/	x		x		
Wakefield Museums and Castles	https://www.wakefield.gov.uk/museums-and-castles/schools-information/	x	x	x	x	x
Wakefield Music Services	https://www.wakefieldmusicservices.org/site/	x	x			x
West Yorkshire Archive Service	https://www.wyjs.org.uk/archive-service/learning/west-yorkshire-archives-schools-learning/		x	x		
Yorkshire Sculpture Park	https://ysp.org.uk/learn		x	x	x	x

With special thanks to

Our partner organisations:

Biffa
National Coal Mining Museum for England
The Hepworth Wakefield
Theatre Royal Wakefield
Wakefield Council Our Year Team
Wakefield Historical Society
Wakefield Libraries
Wakefield Museums and Castles
Wakefield Music Services
Wakefield Traded Services
West Yorkshire Archive Service
Yew Tree Arts
Yorkshire Sculpture Park

Our individual contributors:

Jackie Craig
Harriet Fletcher
Jane Howroyd
John Mayson/ArtJohn
Nick Park
Bryony Pritchard
Seb & Charlie Design Studio
Nick Singleton
Gemma Whelan
Jason Wilsher-Mills

Our schools:

Carlton Junior & Infant School
Castleford Park Junior
Crofton Infant School
Fairburn View Primary School
Hendal Primary School
Kings Meadow Academy
Lee Brigg Infant School
Martin Frobisher Infant School
The Mount Junior and Infant School
Pinderfields Hospital PRU
Three Lane Ends Academy
West Bretton Junior and Infant School

A huge thank you to
project coordinator Kate Fraser
for her enthusiasm and dedication
in leading this project, and to
everyone involved in developing
the Wakefield Curriculum.

