



Myths, Magic and Haunting Tales

Spooky sculpture and nature hunt

Pick up a YSP map to help you find your way

- ▶ Uncover eerie sculptures and spin a tale filled with magic and myth
- ▶ Let your imaginations run wild
- ▶ At the end, decide on your favourite sculpture of the day
- ▶ After you've explored these mystical works outside, journey to the Underground Gallery
- ▶ Don't forget to visit the final room, where the **Imagination Station** awaits (open 11.00–15.30)

Distance: approximately 1.7km / 1 mile

You will walk over gravel paths with inclines and grassy areas that can get muddy at times

Spine-tingling stopping points

1. Discover a towering, mysterious door

Head through the YSP Centre and once through the doors, look back at the wall of the building to discover...

Sculpture: Jaume Plensa, *Wonderland*
Map grid reference: F11



Did you find it?

Choose a word to describe it

Did you find it?



Choose a word to describe it

2. Seek out a sculpture with lots of eerie eyes

Head down the steps and turn left. Go through the hedge and turn to your left to find...

Sculpture:
Suhasini Kejriwal, *Garden of Un-Earthly Delights*
Map grid reference: F10



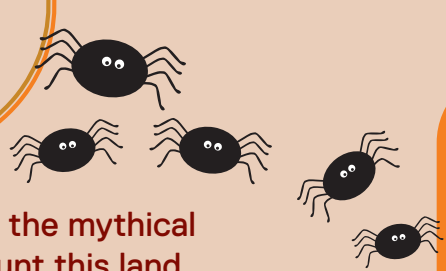
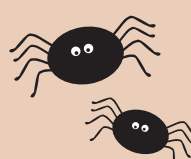
Did you find it?

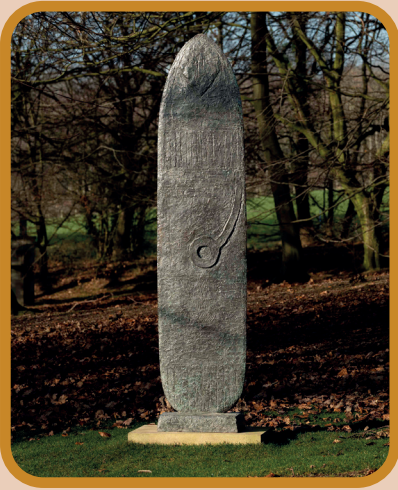
Choose a word to describe it

3. Look out for the mythical beasts that haunt this land

Continue along the Formal Terrace. On the grassy area at the end you will see...

Sculpture: Jordy Kerwick, *Hydra vs Bear*
Map grid reference: G11





4. Find the shield of shadows

Cross the road and bear right as you walk down the hill to encounter...

Sculpture:
William Turnbull, *Ancestral Figure*
Map grid reference: H10

Did you find it?

Choose a word to describe it

5. Locate a sculpture that is part animal and part human

Head downhill through the car park. Follow signs for Lower Park. Near the Camellia House you will find...

Sculpture:
Sophie Ryder, *Sitting*
Map grid reference: H9



Did you find it?

Choose a word to describe it

6. Find a sculpture that is made up of parts of three figures

Venture back towards the YSP Centre. In front of the Underground Gallery discover...

Sculpture:
Bharti Kher, *The Intermediary Family*
Map grid reference: F11



Did you find it?

Choose a word to describe it

Now head into the Imagination Station inside the Underground Gallery (open 11.00–15.30)

Here, you can draw your mythical land, write your story, read books, and create sculptures from your own imagination. You can even try out a new identity with our animal masks, tails and hats. If the gallery is closed, why not sit and share your story together with one of the gigantic sculptures quietly listening to you.

YSP is a registered charity (1067908)
We rely on donations, fundraising and commercial activity to remain open and to continue to create meaningful, enjoyable experiences for everyone in a unique environment. Please donate or consider becoming a YSP Friend. Visit ysp.org.uk for more information.

