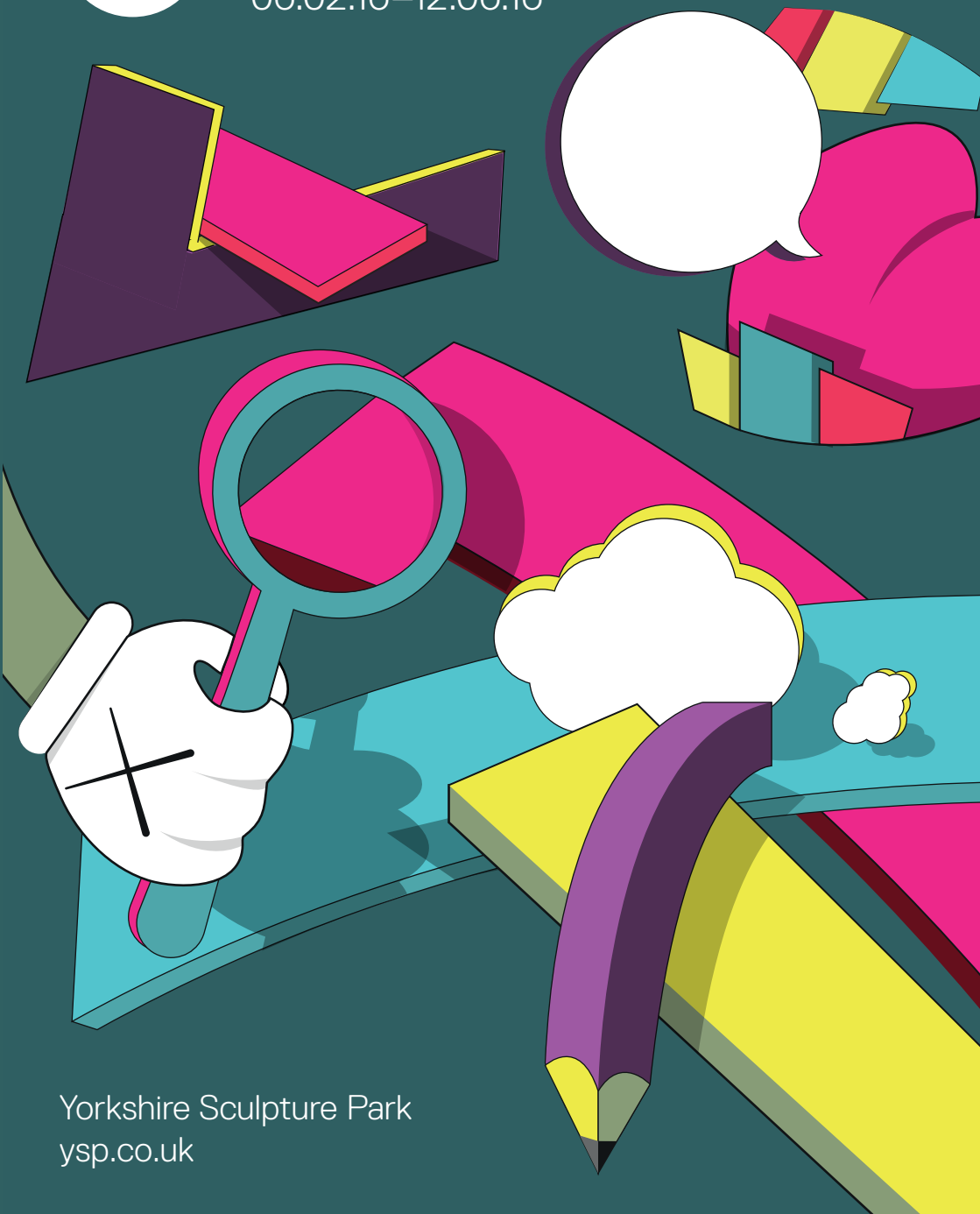


YSP

KAWS
Family Activities
06.02.16–12.06.16



Yorkshire Sculpture Park
yvsp.co.uk

Welcome to KAWS at Yorkshire Sculpture Park, an extraordinary exhibition of intriguing sculptures and large colourful paintings.

KAWS' real name is Brian Donnelly. He chose KAWS for his name as an artist because he liked the way the letters looked together when he was doing graffiti.

Look around at the art works.

Do they look like they were made recently or a long time ago? Why?

Make up a new name, so no one knows if you are a boy or a girl.

Now you have a new 'hush hush' identity.
Write or draw the amazing things you would do.

KAWS uses different materials to make paintings, sculptures, clothes and toys. Some are not what they seem.

Can you guess what the sculptures are made from?

Have a look at the labels to see if you're right.

KAWS takes well-known characters and changes them. Sometimes they look like they've grown up and had lots of experiences.

Are any of the characters familiar?

Who is your favourite cartoon character?
Can you imagine them in 40 years' time?
What stories would they tell about their lives?

Draw your favourite character. Capture how it is feeling in your drawing. Write a caption that helps us understand your character.

Look closely at KAWS' characters. Are there any features that they all share?

Have you spied the crossed out eyes? What do the crosses make you think about? Where else might you see a large cross?

At home
make a game where you only draw part of a cartoon character and other members of your family try to guess who it is.

Are there special toys you collect? Do you play with them or keep them on display?
At home make your own art gallery using your special things. Invite your family to see it. Use different spaces in your house. Can you make super sized drawings based on some of your toys and add them to your exhibition?

KAWS sometimes paints each colour in his paintings as many as 15 times. This makes the paint rich, bright and very smooth. Instead of brushes he often uses sponges on sticks so it is impossible to see brush marks.

Look carefully at the paintings. Look from different angles – the side, the floor, close up and far way.
Imagine climbing into one of the paintings. Would it be a friendly place? What sounds would you hear? Would you be still or moving?

Choose one or more of KAWS' paintings and redraw the shapes and patterns you can see.

Now add a character. Is it big or tiny? Is it silent or do you want to add a speech bubble?

KAWS plays with scale, often making things really, really big.

Go to Lower Park and see if you can spy the gigantic characters he has made. Do they look heroic, happy, sad or lonely? Take on the sculpture's pose and move around keeping in character.

Around the Park spot other sculptures – a tomato-shape sculpture by Joan Miró, a colourful octopus by Marialuisa Tadei.

Why do artists sometimes make things big?
What would you like to make really big?
Why?

How are you feeling now? Do you always feel the same? What happens to your body when you feel sad, frightened, proud, or even when you are thinking?
Take on a pose using your whole body. Can your family tell what you are feeling?

Talk about these sculptures as a family. Do any of them remind you of cartoon characters?

ART ADVENTURERS

05.03.16 + 04.06.16 / 10.30–12.00
& 13.30–15.00 / £5, supervising adults
free (suitable for age 5+)

Inspired by KAWS, join performer Natalie Bellingham to become part of your own fantastical tale.

THINKING BIG AND MAKING SMALL (X MARKS THE SPOT LAUNCH EVENT)

19.03.16 / 11.00–16.00 / Free / Drop in
(suitable for all ages)

To launch our exciting new creative space, *X Marks the Spot*, YSP Learning will be transformed with images, toys and curious objects. As a family come explore and make.

X MARKS THE SPOT

20.03.16, 24–28.03.16, 01–03.04.16 +
09.04.16 / 11.00–16.00 / Free / Drop in
(suitable for all ages)

Make your mark in our playful family space. Encounter interesting and curious objects alongside inspiring works from the National Arts Educational Archive.

KAWS SCREEN PRINTING

23.03.16 & 28.05.16 / 11.00–13.00 &
14.00–16.00 / £6 (suitable for age 6+)

Working with printmaker Sally Gilford, design and play with pattern, colour and shape to make your very own screen-printed piece of art.

TOY FACTORY

30+31.03.16 / 10.30–12.30 & 13.30–15.30 /
£3 (suitable for all ages)

Inspired by KAWS' monumental sculptures, create your own altered toy figures from plaster casts and soft materials.

THE DRAWING IMAGINARIUM: ILLUSTRATION FESTIVAL WITH ANORAK MAGAZINE

01–02.04.16 / 10.00–17.00 / Free / Drop in

Expect contraptions, dolls houses, paper costume competitions, giant colouring adventures, book readings and many imaginative workshops designed to stimulate creativity and delight all. Supported by Arts Council England

END AT THE START

(X MARKS THE SPOT CLOSING EVENT)

10.04.16 / 11.00–16.00 / Free / Drop in
(suitable for all the family)

Join us to celebrate the final day of *X Marks The Spot*. Design your own characters, draw in unusual ways, play with light and be inspired to make.

Book now at ysp.co.uk/events

Or call +44 (0) 1924 832631

Family & Learning Programmes

If you'd like further information about our family programme contact:

Emma Spencer,
Family Learning Coordinator
emma.spencer@ysp.co.uk

If you'd like information about schools offers for the KAWS exhibition contact:

Kathryn Welford,
Formal Learning Coordinator
kathryn.welford@ysp.co.uk

Yorkshire Sculpture Park
West Bretton
Wakefield WF4 4LG
United Kingdom

ysp.co.uk

[@YSPsculpture](https://twitter.com/YSPsculpture) / #KAWSyp

GALERIE PERROTIN



HONG KONG
CONTEMPORARY
ART

Mtec



Supported using public funding by
ARTS COUNCIL
ENGLAND

wakefieldcouncil
working for you

LIZ AND TERRY
BRAMALL FOUNDATION

SAKANA
FOUNDATION

Designed by SUMO